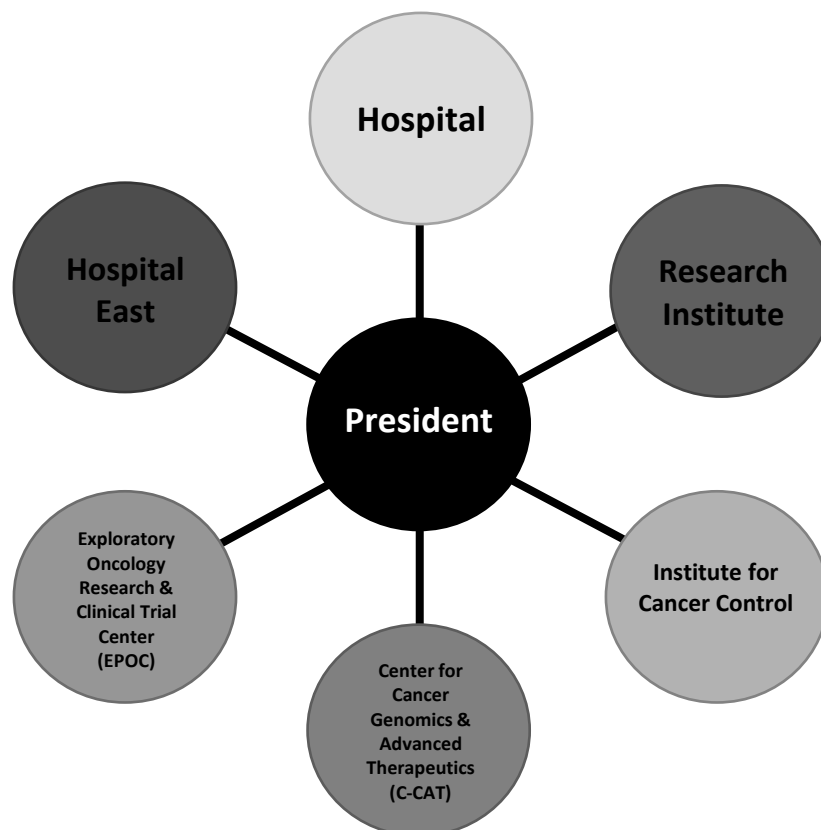


# NCC Overview

## About NCC

The National Cancer Center (NCC) was founded in 1962 by the central government as the first national center in Japan. We lead in cancer treatment and research, serving as a hub for the nation.

## Organization



### **【Vision】**

NCC is committed to providing the best possible cancer treatment and care in partnership with communities

### **【Mission】**

- Discover the fundamental causes of cancer, towards early diagnosis and prevention
- Promote innovation in diagnosis and treatment
- Establish and make available the most advanced standard of care to all patients
- Explore and support patients with the best "cancer survivorship"
- Garner cancer information and disseminate to society
- Develop talent
- Advocate policies

# Patient Care

Our mission is to provide the best medical care for all. The Hospital (Tsukiji) and Hospital East (Kashiwa) serve and lead hospitals nationwide in cancer treatment and research.

(Tsukiji / Kashiwa)



**Beds**  
1,003 (578 / 425)



**Screening center visits**  
2,341



**Inpatients**  
Per day 907 (503 / 404)



**Operations**  
9,800 (5,456 / 4,344)



**Outpatients**  
696,786  
(375,373 / 321,413)

(FY 2021)

# Staff

Our staff represent diverse qualifications, from epidemiologists, physicians, oncology surgeons, researchers, data scientists, to administrative professionals.



**MD**  
465



**RN**  
1,342



**Researchers**  
752



**Residents**  
246



**Others**  
1,325

**4,138**

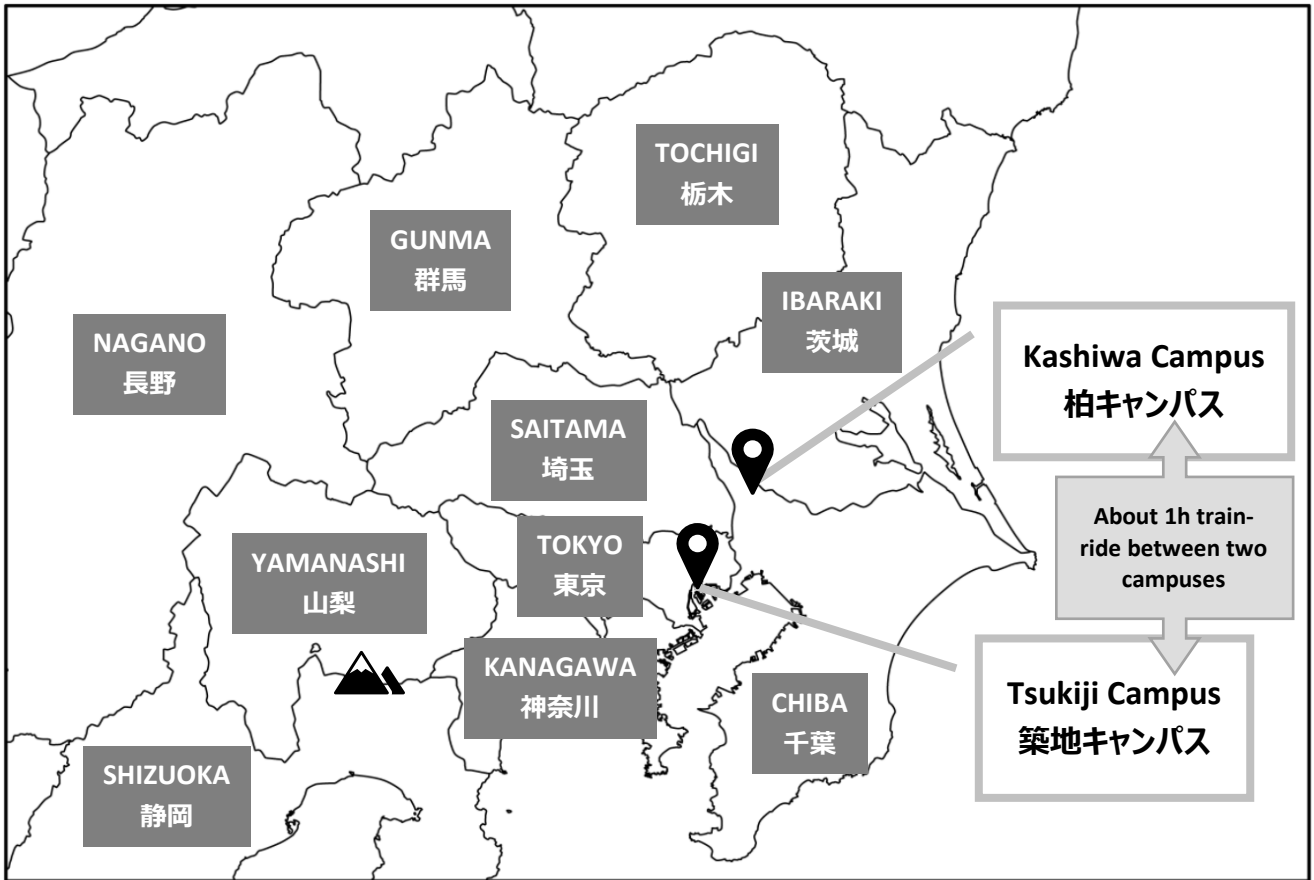
**Total**

(FY 2021)

## Links

- > [About NCC | National Cancer Center Japan](#)
- > [Cancer Control in Japan](#)

# NCC Campus Map



## National Cancer Center Hospital East / Kashiwa Campus

国立がん研究センター東病院 / 柏キャンパス

6-5-1, Kashiwanoha, Kashiwa-shi, CHIBA 277-8577

〒277-8577 千葉県柏市柏の葉 6-5-1

## National Cancer Center Hospital / Tsukiji Campus

国立がん研究センター中央病院 / 築地キャンパス

5-1-1, Tsukiji, Chuo-ku, TOKYO 104-0045

〒104-0045 東京都中央区築地 5-1-1

