

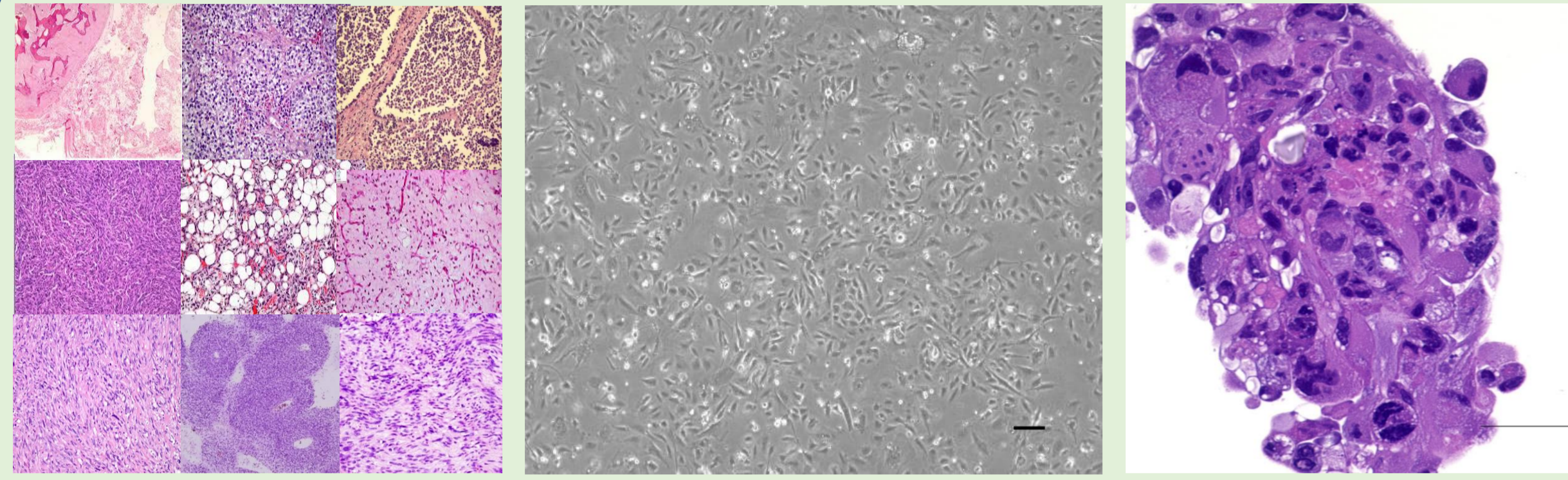
PATIENT-DERIVED SARCOMA MODELS TOWARDS NOVEL BIOLOGY AND TREATMENT

Tadashi Kondo¹, Rei Noguchi¹, Yuki Yoshimatsu¹, Ryuto Tsuchiya¹, Takuya Ono¹, Yookle Sin¹, Akane Sei¹, Mami Takahashi², Jun Sugaya³, Akihiko Yoshida⁴, Kaoru Hirabayashi⁵, Iwao Ozawa⁶, Hidetaka Kosako⁸, Hiroshi Ichikawa⁹, Kazutaka Kikuta⁷, Akira Kawai³

1. Division of Rare Cancer Research, 2. Central Animal Division, 3. Department of Musculoskeletal Oncology, 4. Department of Diagnosis Pathology, National Cancer Center Hospital, Tokyo, 5. Division of Diagnostic Pathology, 6. Division of Hepato-Biliary-Pancreatic Surgery, 7. Division of Musculoskeletal Oncology and Orthopaedics Surgery, Tohigi Cancer Center, Tohigi, Japan, 8. Fuji Memorial Institute of Medical Science, Tokushima University, Tokushima, Japan. 9. Fundamental Innovative Oncology Core, National Cancer Center, Tokyo, Japan.

Patient-derived sarcoma models

Cell line, Organoids, and PDXs

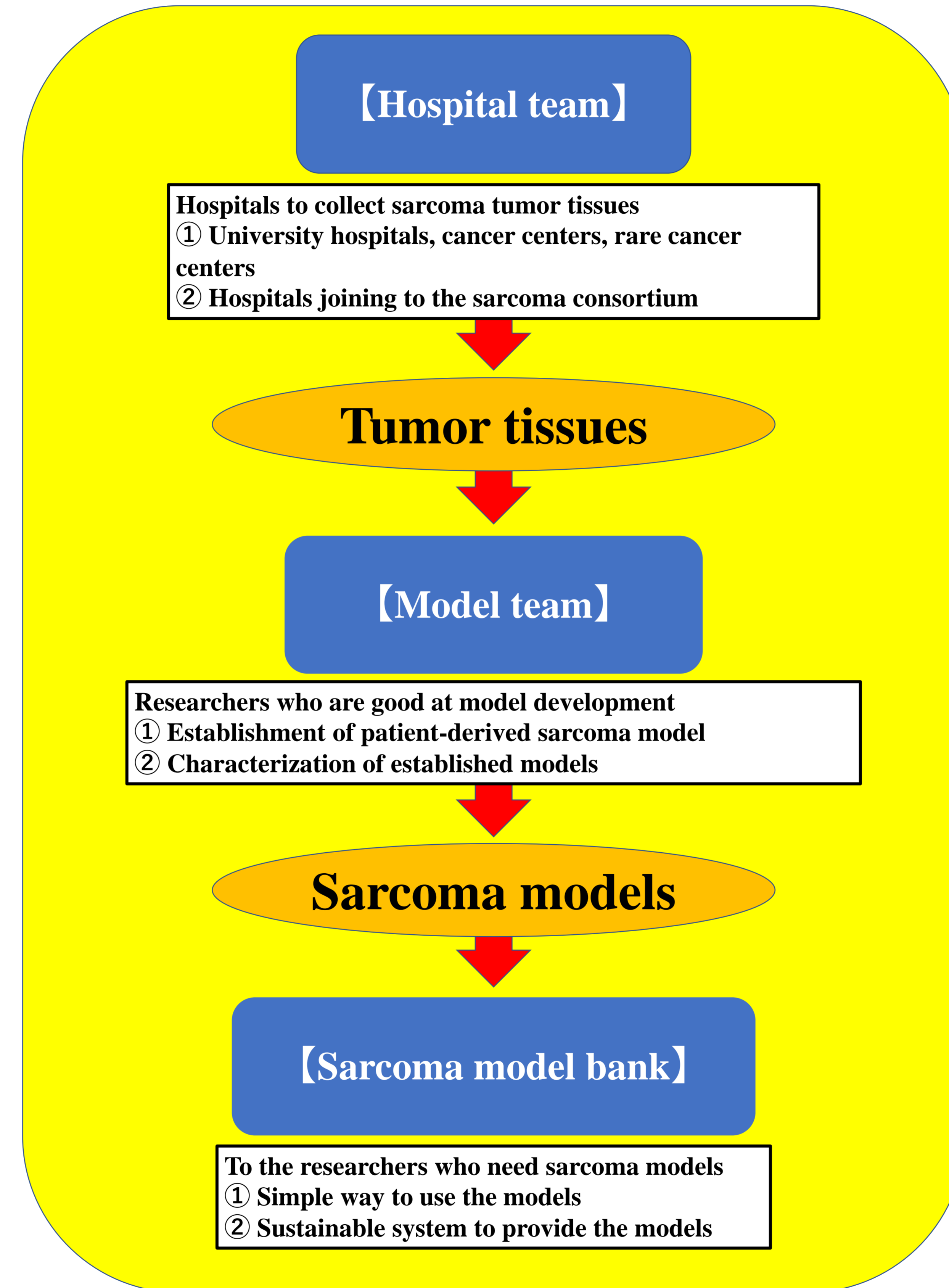


We established the models for the following histological subtypes

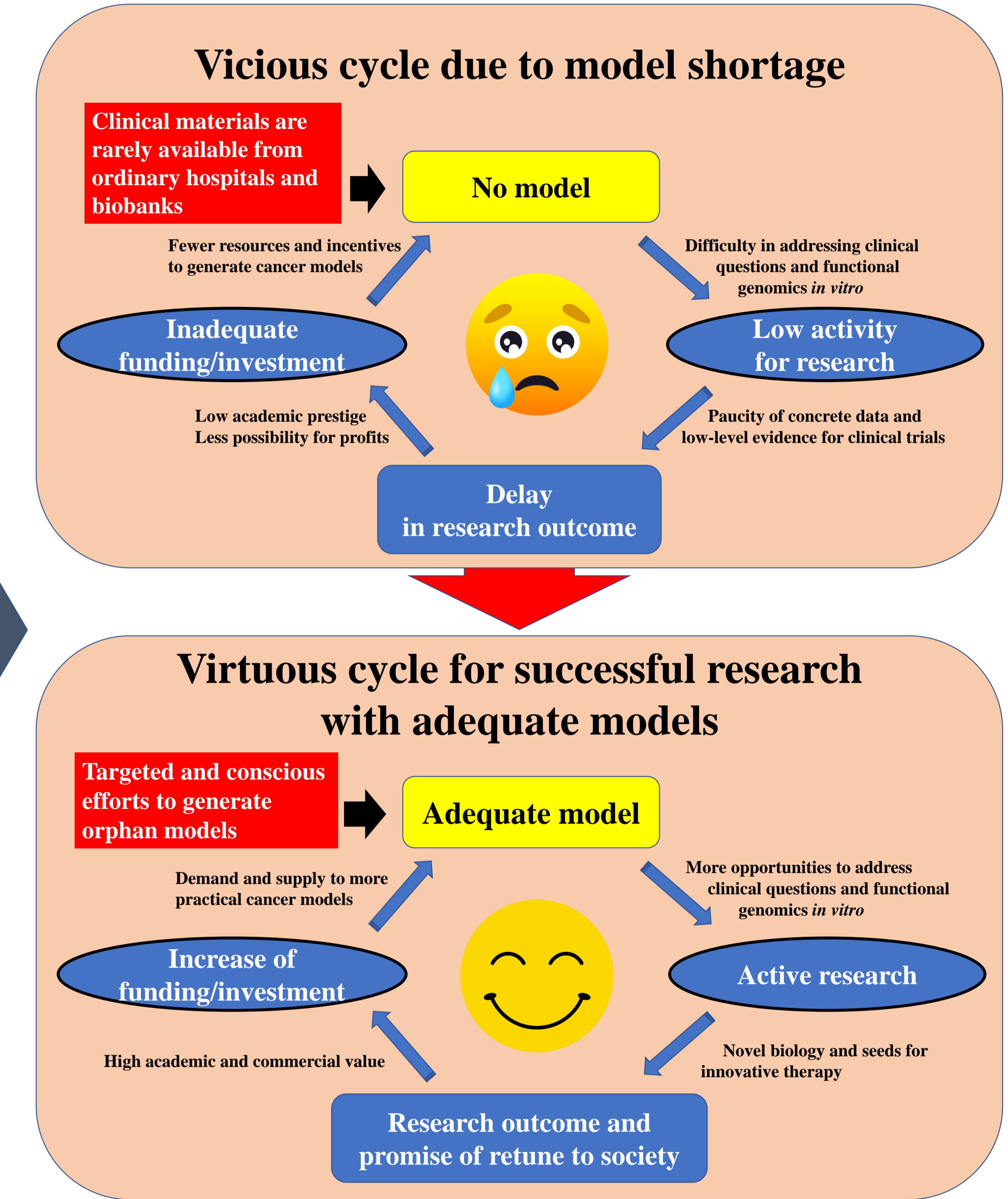
1. Alveolar soft part sarcoma
2. Chondrosarcoma
3. CIC-DUX4 sarcoma
4. Clear cell sarcoma
5. Dermatofibrosarcoma protuberans
6. Ewing's sarcoma
7. Giant cell tumor
8. Leiomyosarcoma
9. Liposarcoma
10. Low grade fibromyxoid sarcoma
11. Malignant peripheral nerve tumor
12. Myxofibrosarcoma
13. Osteosarcoma
14. Perineurioma
15. Pleomorphic sarcoma
16. Rhabdomyosarcoma
17. Solitary fibrous tumor
18. Synovial sarcoma
19. Undifferentiated pleomorphic sarcoma
20. Unclassifiable sarcoma

We will establish the models for all histological subtypes

Multi-institutional collaboration



Our model will change the future of sarcoma research



Achievements

We created the protocol to establish sarcoma cell lines efficiently.
We established a substantial number of sarcoma models
We deliver the established models to the researchers upon their requests

Issues to be addressed

We need tumor tissues of very rare sarcomas
We need the collaborations with experts for other model types

System to be created for the further model establishment

Multi-institutions for clinical materials
VS
Multi-institutions for model establishment

Adequate model will change the future of sarcoma research

We have a vicious cycle due to model shortage in the sarcoma research. We can break it by generating adequate sarcoma models and share them in the research community.

The authors declare no conflicts of interest associated with this presentation