

National Cancer Center Japan


OVERVIEW

March 2026

National Cancer Center JAPAN

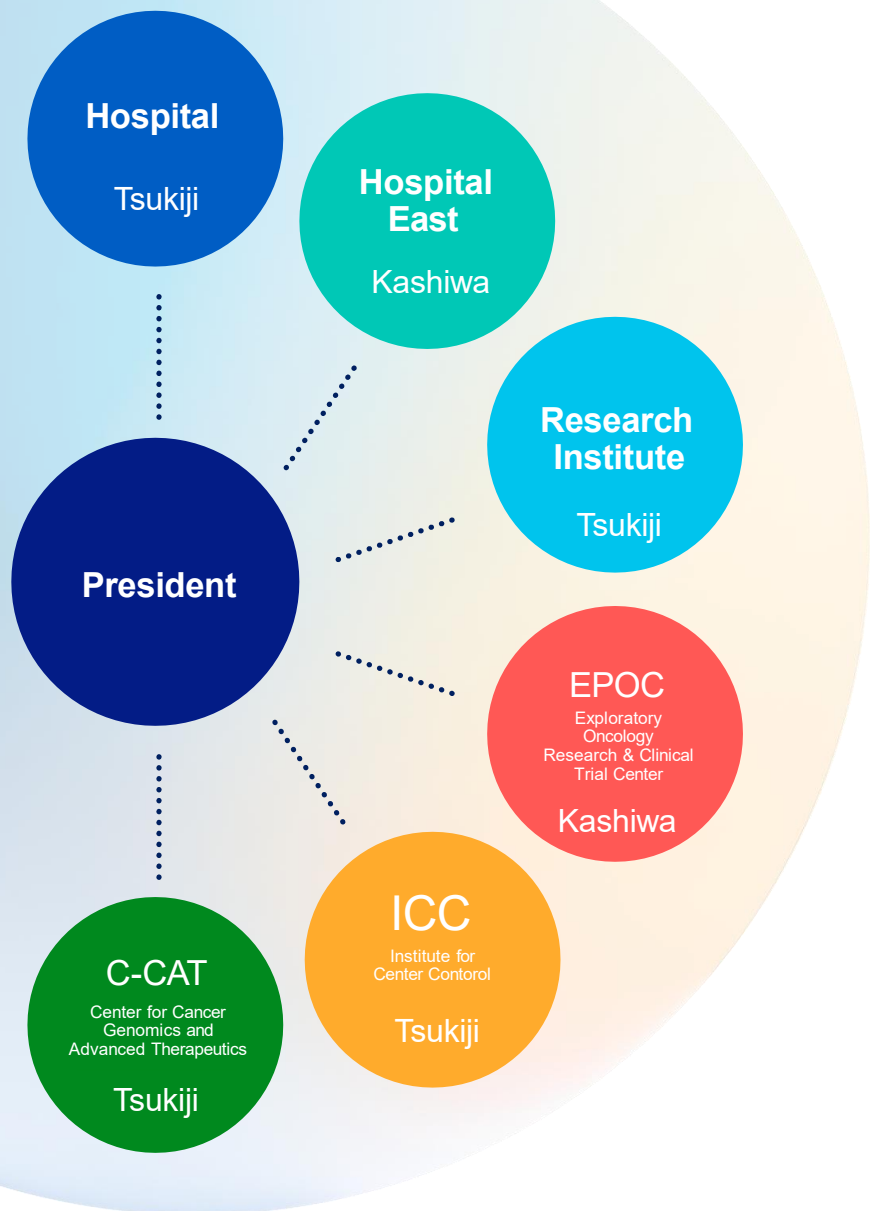
Leading the nation's cancer treatment, prevention, control programs, research and education

- 1962 Established by statute as the first National Center for Advanced and Specialized Medical Care by the **Ministry of Health and Welfare (MHLW)**
- 2010 Designated **“Incorporated Administrative Agency”** as a Public Service Entity
- 2015 Appointed **“National Research and Development Agency”** as the Highest Ranked Research Organization



Tsukiji Campus
Tokyo

Kashiwa Campus
Chiba



NCC Japan Organization

Vision

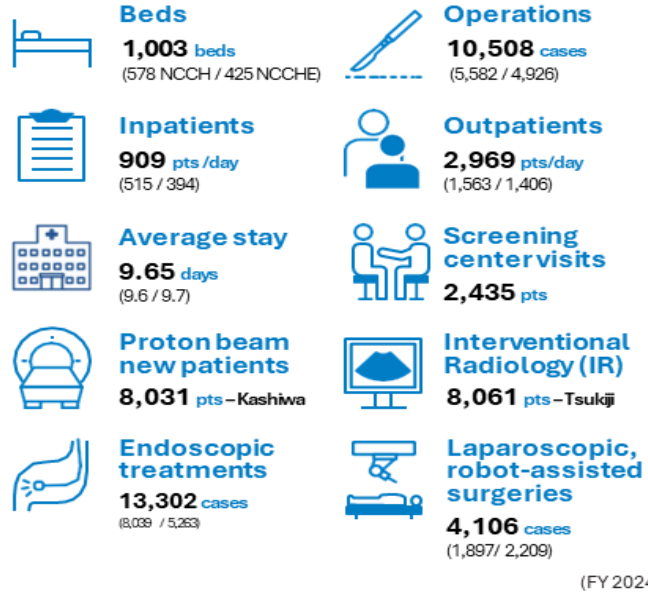
Deliver the best possible treatment and prevention to all people through collaboration with society

Mission

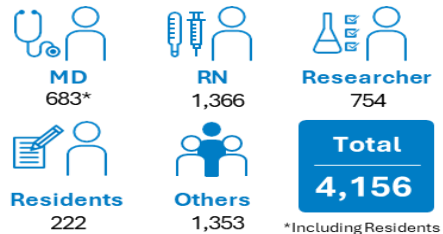
1. Elucidate the fundamental nature of cancer and advance personalized medicine
2. Further optimize and promote cancer prevention
3. Develop and implement innovative medicine
4. Establish and disseminate the standard of care
5. Enhance research and support for cancer survivorship
6. Collect and disseminate information on cancer
7. Foster the development of human resources
8. Advocate cancer-related policies
9. Deepen global collaboration

Who NCC Japan is in Numbers

Patient Care

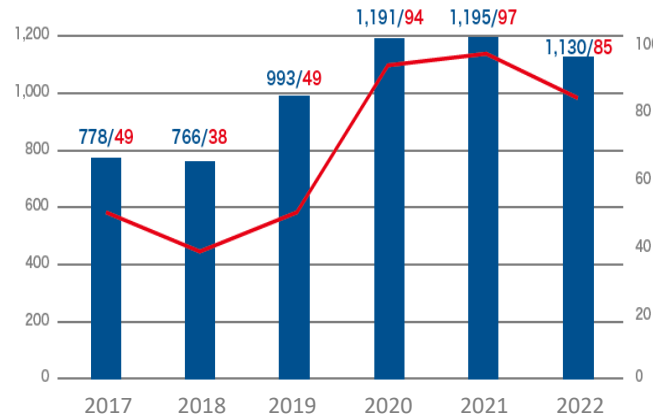


Professional Staffs



Publications & Citations

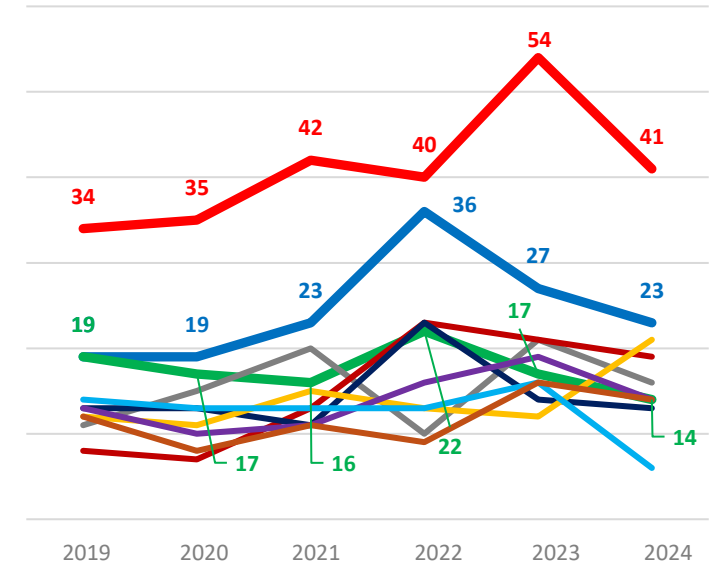
of international articles published
(as of July 1, 2023)



Source: Modified data from the Essential Science Indicators (22 categories) by Clarivate Analytics. Only articles, not reviews, are appeared.

	2017	2018	2019	2020	2021	2022
Citations	38,390	31,463	27,503	27,678	10,866	3,185
Highly Cited	33	30	44	35	42	38

of Highly Cited Papers (HCP) in Japan
ESI (Clinical Medicine & Multidisciplinary)



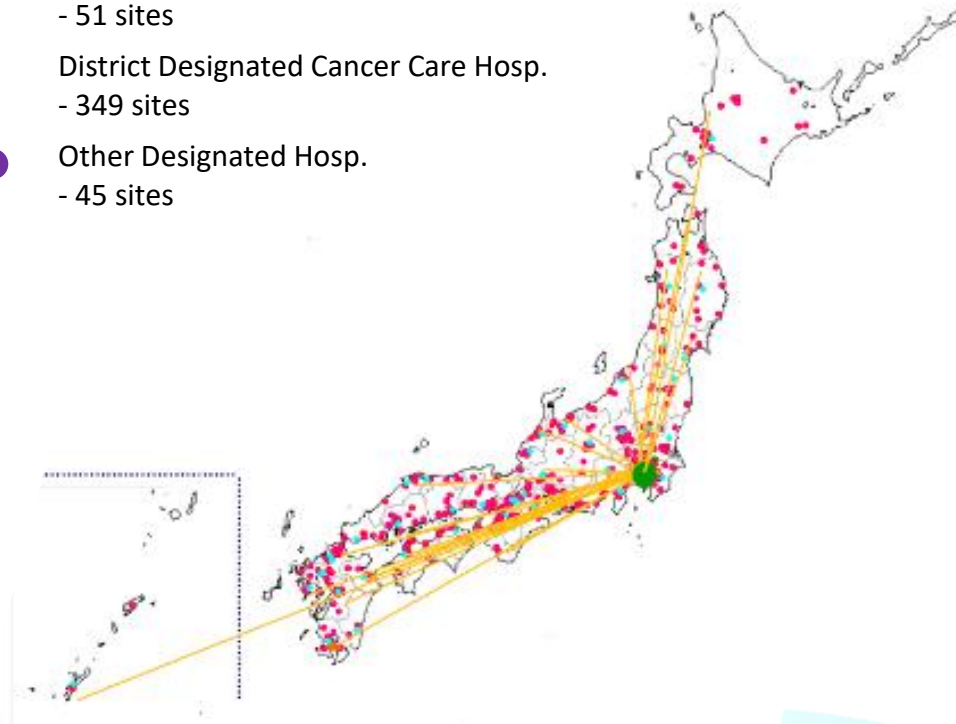
NCC Japan
The University of Tokyo
Kyoto University
Aichi Cancer Center
Keio University

Source: Data and classification by Clarivate Analytics, but only articles, not reviews, are appeared.
HCP: Top 1% papers with high volume # of citation in the world.

Cancer Care Network to Address Unmet Medical Needs and Solutions in Japan

Japan Nationwide Network

- National Cancer Center Japan Hospitals
- 2 sites
- ◆ Prefectural Designated Cancer Care Hosp.
- 51 sites
- District Designated Cancer Care Hosp.
- 349 sites
- Other Designated Hosp.
- 45 sites



Relieve Project

Rare cancer patients gain access to consultations for accurate diagnoses through the nationwide network, developing new treatments

Pediatric Cancer Care

Top priority - treatment development, particularly molecular targeted drugs

MASTER KEY Project

Prospective registry study, with over 3,000 cases registered, now including Malaysia, Thailand, Indonesia, the Philippines, Viet Nam and Taiwan.

Neuroendocrine Carcinoma (NEC)

Standard treatment established for the rare cancer, with treatment efficacy underpinned by research

Thymic Cancer

Investigator-initiated study led to the world's first approval of lenvatinib indication for unresectable thymic cancer

Commitment to Clinical Development and CGM

of Clinical Development by NCC Japan

Drug Development (FY2024)	
Industry Sponsored Trials	982
Investigator Initiated Trials	103
Global Clinical Trials	821
First-in-Human Trials	227
Clinical Research	2,465

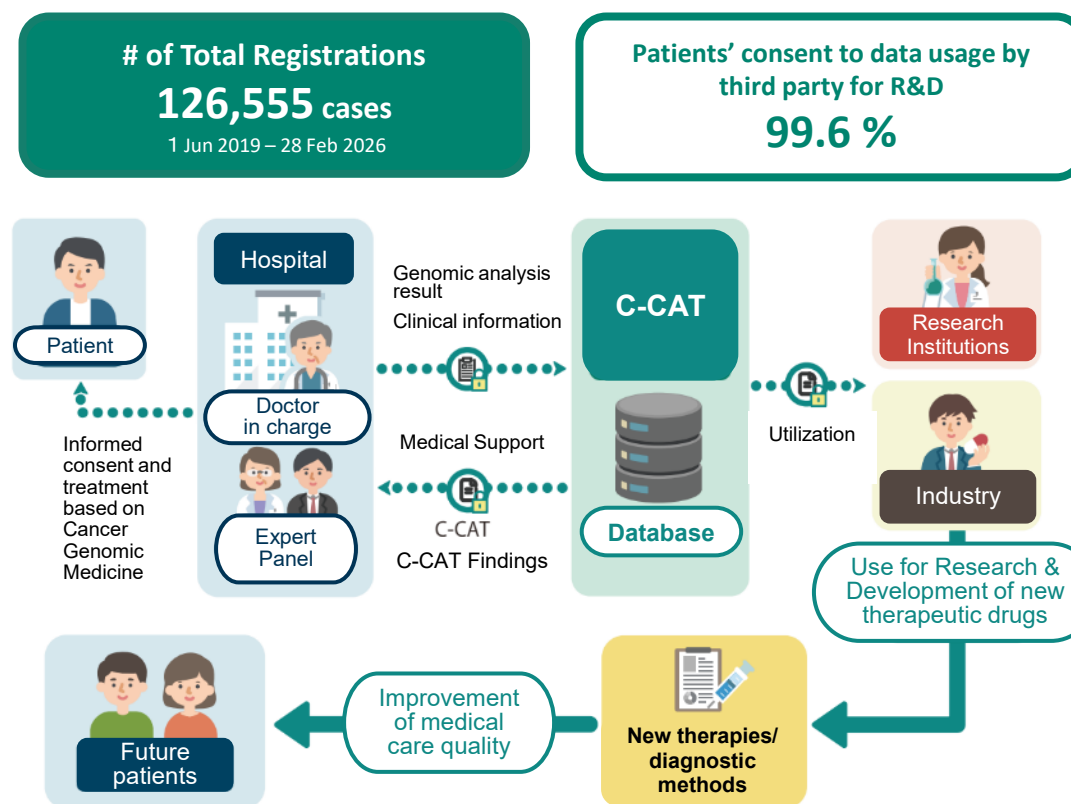
Capabilities and Strengths on clinical trials

- **Rapid Site Open**
 - IRB submission to contract: ca. 30 days
- **Quick and High-volume enrollment**
 - with FPI achievement and
 - with designation of the first author
- **Quality engagement**
 - Screening/DLT evaluation failure < 5-10%
- **Success rate of paired biopsy > 80%**

Cancer Genomic Medicine Network

C-CAT (Center for cancer Genomics and Advanced Therapeutics) enhances the quality of medical care by aggregating data from cancer gene panel tests.

- Core Hospitals for Cancer Genomic Medicine - 13 sites
- Designated Hosp. - 32 sites
- Cooperative Hosp. - 219 sites



of Total Registrations
126,555 cases
 1 Jun 2019 – 28 Feb 2026

Patients' consent to data usage by third party for R&D
99.6 %

Commitment to Translational Research

Bioresource: J-PDX Library

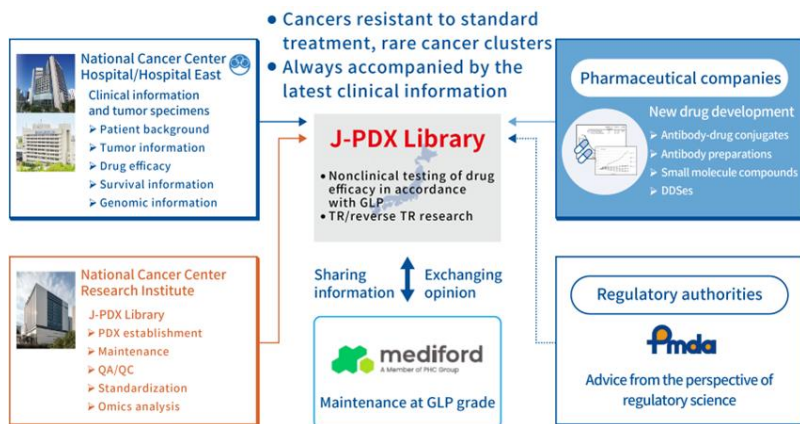
- The J-PDX Library has started since 2018 with the support of the Cyclic Innovation for Clinical Empowerment (CiCLE) project of the Japan Agency for Medical Research and Development (AMED)
- The J-PDX Library focuses on advanced or recurrent cancers and rare cancers for which anticancer drugs are difficult to develop, and it is also actively creating PDX models from biopsy specimens that have acquired resistance to standard treatment.
- The Library is adding detailed clinical information to each model.

of registered
2,396 specimens

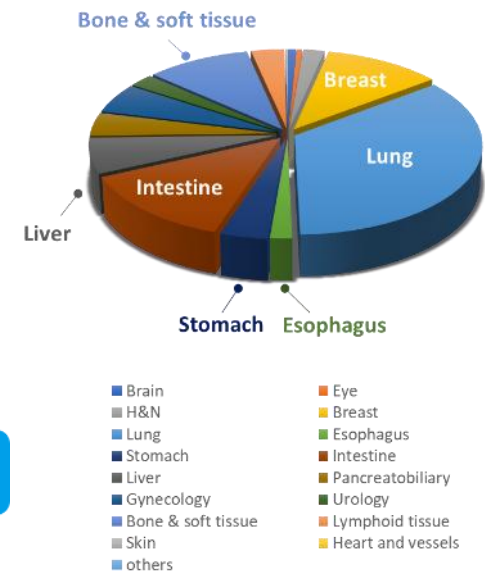
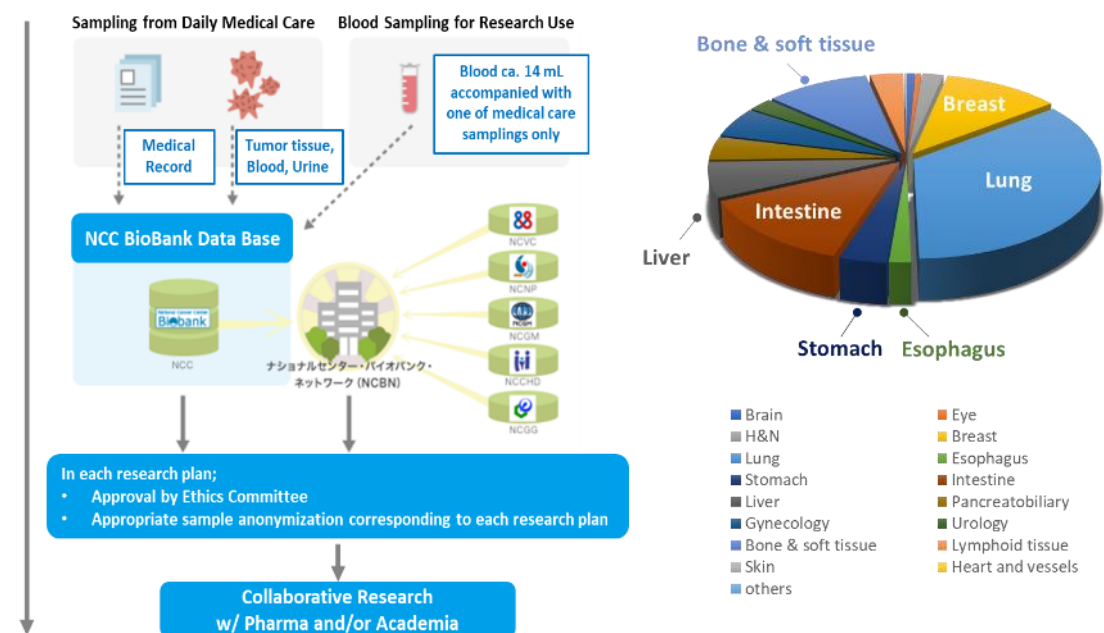
of engrafted
741 models

(As of Dec 2025)

You can search the models' availability: <https://j-pdx.ncc.go.jp/en/>



Bioresource: NCC BioBank



As of Apr 2024 (cases/samples)		# of total stored	# of total shared for research collaboration
Frozen Tissue		31,267 / 131,491	16,769 / 25,235
Blood	Plasma	121,520 / 583,757	11,054 / 14,226
	DNA	121,586 / 502,380	24,596 / 24,639
	Lysate for RNA extraction	117,157 / 118,167	2,441 / 2,441

- Matched blood and FFPE samples are available for all frozen tissue samples, which can be used for WGS, long read sequencing, etc.

Global Partnership & Educational Contribution

Global Partners



G7 Cancer's Presidency by NCC Japan (2026-)



Member sites;
INCa, NCI, DKFZ,
CRUK, CIHR,
Cancer Australia,
NCCJ

C8 Consortium

Accelerates the development of novel cancer research methodologies, collaborative research, fosters emerging talent and enhances the impact of clinical care



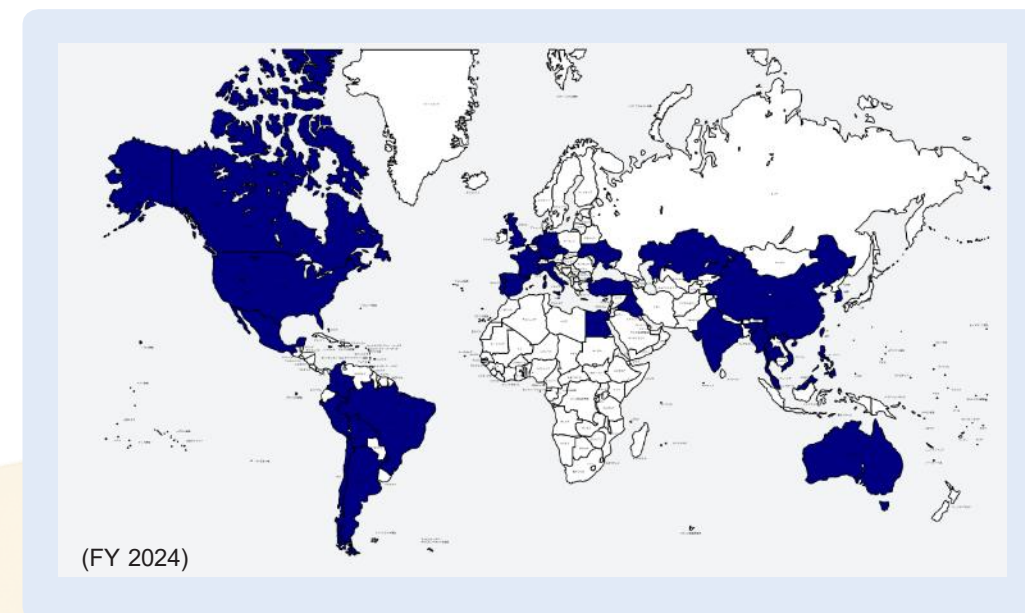
Member sites;
DFCI, MDACC, PMCC/UHN,
PMCC/AUS, Curie,
Christie/Manchester,
CBRC/Tel-Aviv Univ, **NCCJ**

Educational Contribution

NCC Japan has observership programs for participants from all over the world. Our e-learning platform provides opportunities regardless of geographical/ time frame limitations. The Physician Scientist Program trains physicians versed in both clinical medicine and basic research.

Observership visitors from 33 countries

Visitor's Institution Country Map



(FY 2024)

Working with the Global Cancer Control communities

International Agency for Research on Cancer (IARC)

- **Global Initiative for Cancer Registry Development (GICR)**
Designated a collaborative centre, NCC Japan supports establishing/building cancer registries across Asia
- **WHO Classification of Tumours**
NCC Japan participates in editing the fifth edition
- **Population-Based Long-Term Surveillance Team**
A joint IARC-NCC team establishing an epidemiological research platform
- **Asian Code Against Cancer**
Serve as the secretariat for coordinating collaboration with ANCCA member

G7 Cancer

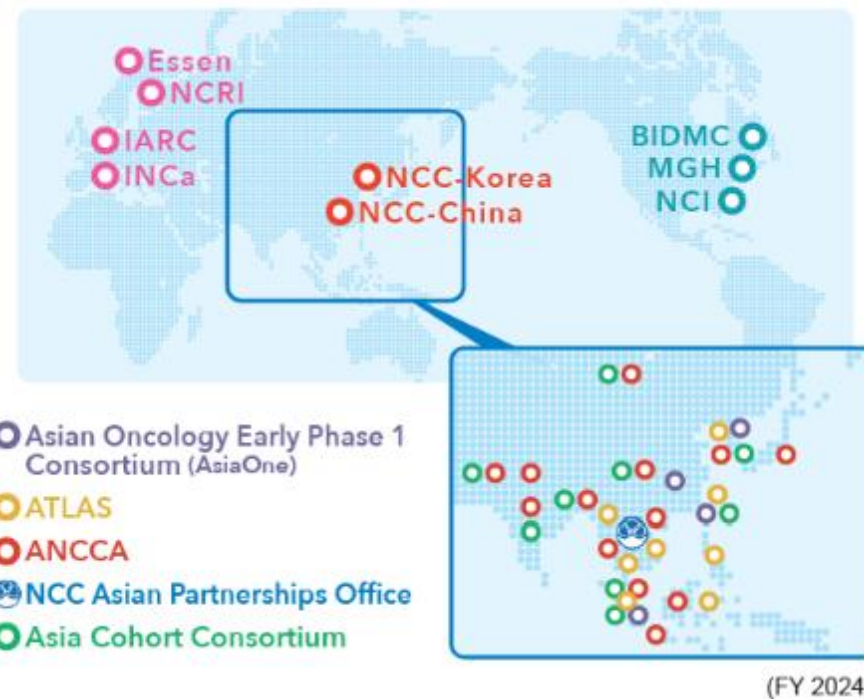
- G7 Cancer is an international partnership to accelerate the global fight against cancer
- The group aims to strengthen cooperation between partners to accelerate the fight against the disease, and in particular to address the most complex challenges.
- The priorities for the G7 are;
 - International data strategy, focused on pediatric cancers as a model
 - Poor prognosis cancers (pancreatic/esophagus/stomach and liver cancers)
 - Cancer outcome inequities
 - Prevention (precancers, screening programs, multi-cancer early detection)



Asian Partnership & Educational Contribution

Research/Clinical Collaboration Network

- **AsiaOne Consortium**
Early new drug development network with bases in Hong Kong, Seoul, Singapore and Taipei
- **LC-SCRUM-Asia**
Expansion of SCRUM-Japan incorporating East Asian partners
- **ATLAS Project / NCC Japan Thai Office**
Establishing a network of collaborative trial sites to lead development across Asia
- **Asian National Cancer Centres Alliance (ANCCA)**
Established in 2005, with 20 national cancer centers, NCC Japan serves on its secretariat team



Major Clinical Trials



Thank you for collaborating with NCC Japan!

Reference Information (Hyperlinks and QR codes)

Official Brochure
(Japanese/English)



NCC Japan



[Web site](#)



NCC
Hospital



[Web site](#)



NCC
Hospital East



[Web site](#)



NCC
Res Institute



[Web site](#)



[NCCRI
Research Index](#)

NCC
EPOC



[Web site](#)



[EPOC
Research Index](#)

NCC
ICC



[Web site](#)



NCC
C-CAT



[Web site](#)

