

 National Cancer Center Japan

Overview

February 2025



National Cancer Center

Leading the nation's cancer treatment, prevention, control programs, research and education

1962 established by statute as the first National Center for Advanced and Specialized Medical Care by the **Ministry of Health and Welfare (MHLW)*1**

2010 designated "Incorporated Administrative Agency*2"

2015 appointed "National Research and Development Agency *3"

*1 MHLW: currently Ministry of Health, Labour and Welfare

*2 Public Service Entity

*3 Highest Ranked Research Organization



Vision and Mission

Prevent, overcome, with and beyond cancer

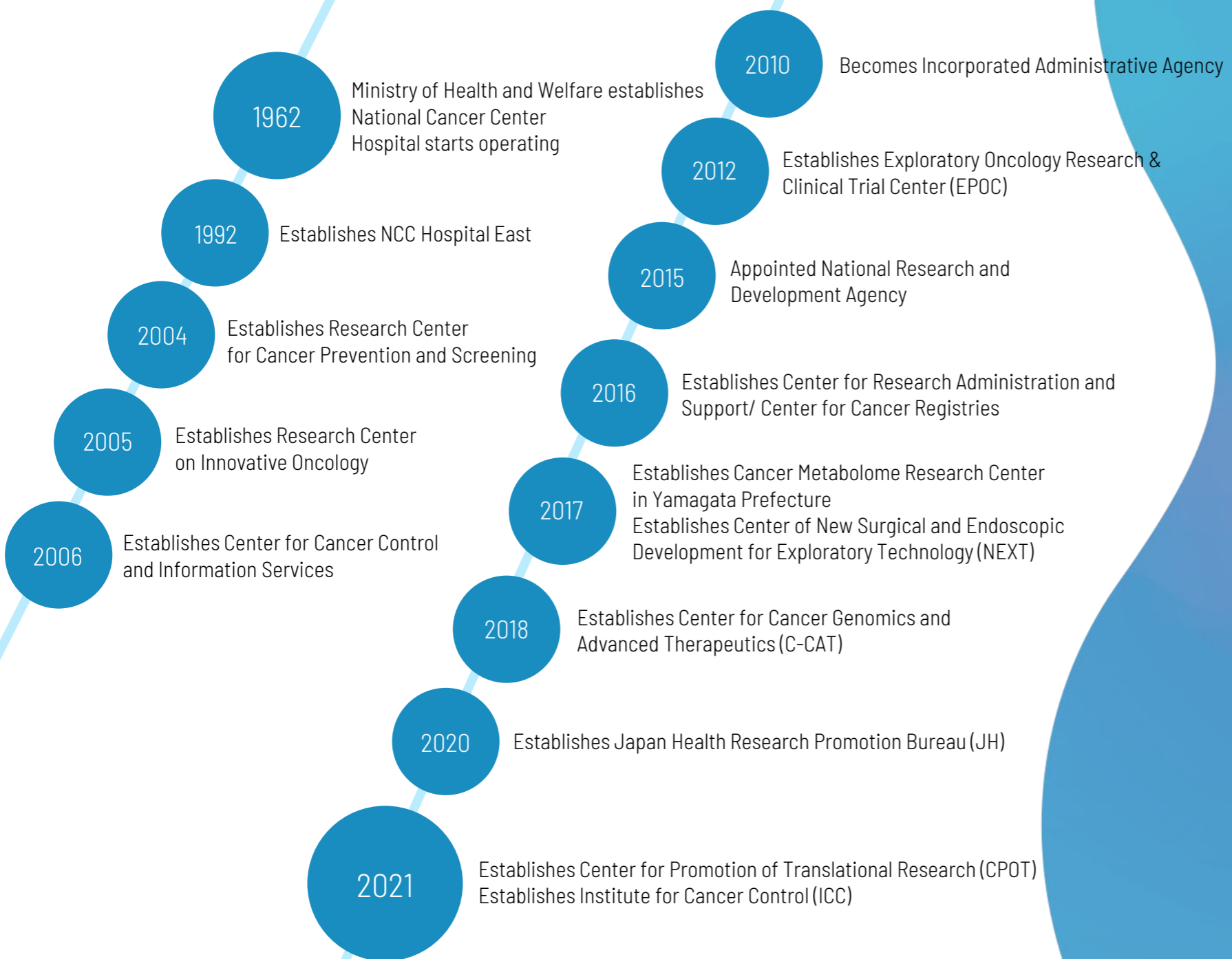
Vision

NCC is committed to providing the best possible cancer treatment and care in partnership with communities

Mission

- Discover the fundamental causes of cancer, towards early diagnosis and prevention
- Develop highly advanced medicine
- Establish and make available the most advanced standard of care to all patients
- Explore and support patients with the best “cancer survivorship”
- Garner cancer information and disseminate to society
- Develop talent
- Advocate policies
- Contribute globally, working with international partners

Milestones

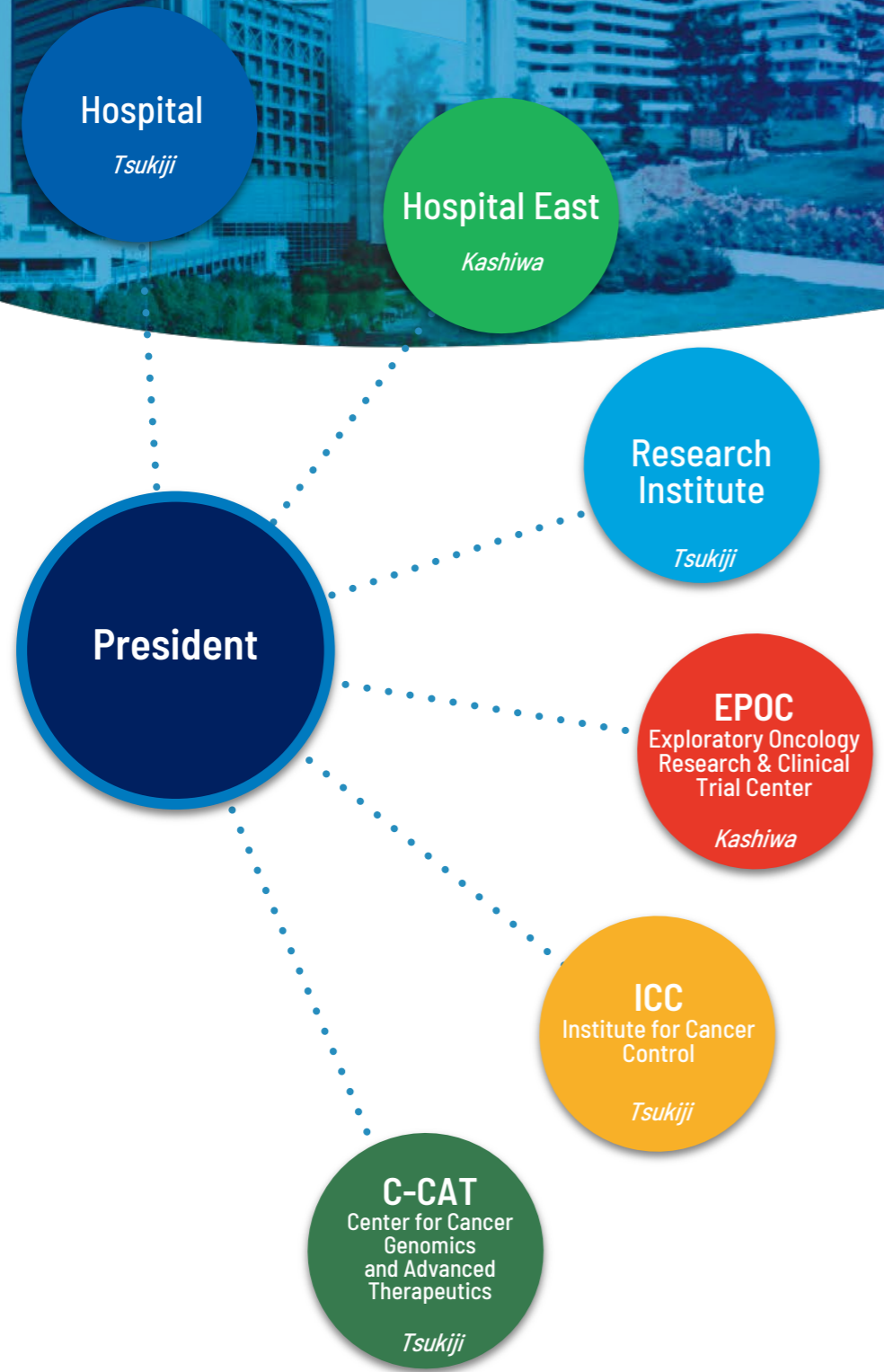


Cancer Control in Japan

- 1964 National Strategy: 5 Pillars of Cancer Control
- 1984 Comprehensive 10-year Strategy for Cancer Control
- 1994 New 10-year Strategy to Overcome Cancer
- 2004 3rd-term Comprehensive Ten-year Strategy for Cancer Control
- 2005 Action Plan 2005
- 2006 Cancer Control Act
- 2007 Basic Plan to Promote Cancer Control Programs
- 2012 2nd Basic Plan to Promote Cancer Control Programs
- 2013 Cancer Registration Promotion Act
- 2014 10-year Strategy of Cancer Research
- 2015 AMED starts Japan Cancer Research Project
- 2016 Revision of the Cancer Control Act
- 2018 3rd Basic Plan to Promote Cancer Control Programs
- 2023 4th Basic Plan to Promote Cancer Control Programs

NCC Organization

Staff: 4,081 (April 2024)
2,948 Full-time staff, 1,133 Adjuncts
685 Staff Doctors, 1,312 Nurses, 768 Researchers, 1,316 Others



- Auditors
- Board of Directors
- Directors' Meeting
- Headquarters for Cancer Information Services
- President's Offices
 - Executive Advisers to President
 - Strategic Planning Bureau
 - Center for Research Administration and Support
 - Center for Promotion of Translational Research
 - Education and Professional Career Development Bureau
 - IT Integrating and Support Center
 - Office for Advanced Medical Care Evaluation & Health Technology Assessment
 - Practical Research for Innovative Cancer Control Management Office
 - Administrative Departments
 - Compliance Office
 - Research Audit Section
 - Library
- Audit office
- Japan Health Research Promotion Bureau

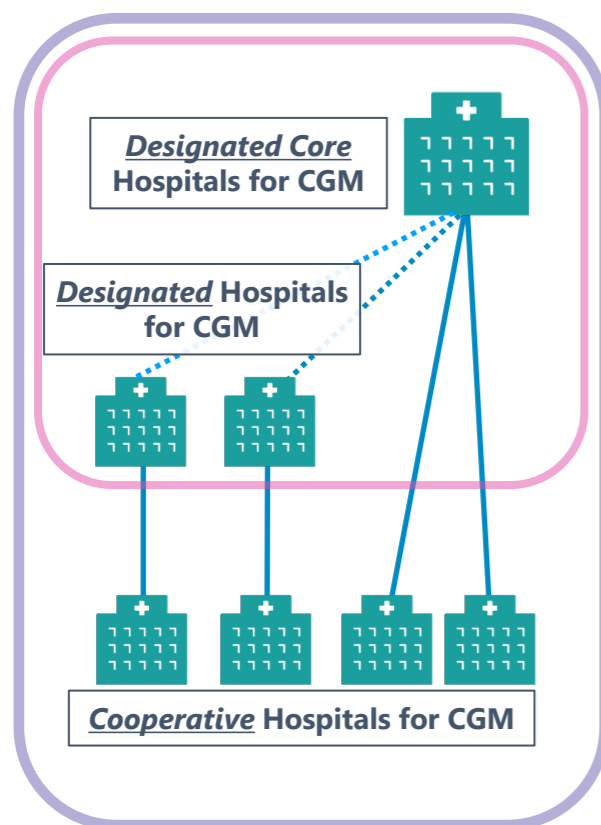
Cancer Genomic Medicine

Establishing Cancer Genomic Medicine in Japan

2017 Roundtable Consortium on the Promotion of Cancer Genomic Medicine Report

2018 Center for Cancer Genomics and Advanced Therapeutics (C-CAT) established

- Gene panel test for blood cancers developed, its efficacy measured
- CIRCULATE-Japan Liquid biopsies measuring circulating tumor DNAs proven to indicate relapse risk
- Information dissemination through official websites

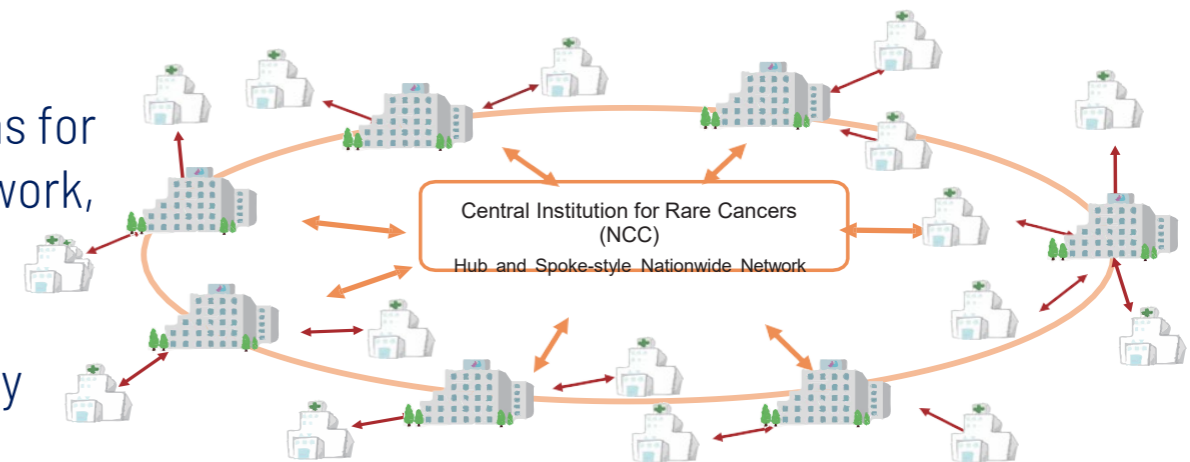


Both hospitals of the National Cancer Center are Designated Core Hospitals (DCH) for Cancer Genomic Medicine, which train precision medicine specialists and lead clinical trials with molecular profiling, in addition to for gene panel test sample preparation, expert panels, and compiling reports on the results.

Nationwide there are 13 DCH, working with 32 Designated and 185 Cooperative hospitals for cancer genomics nationwide.

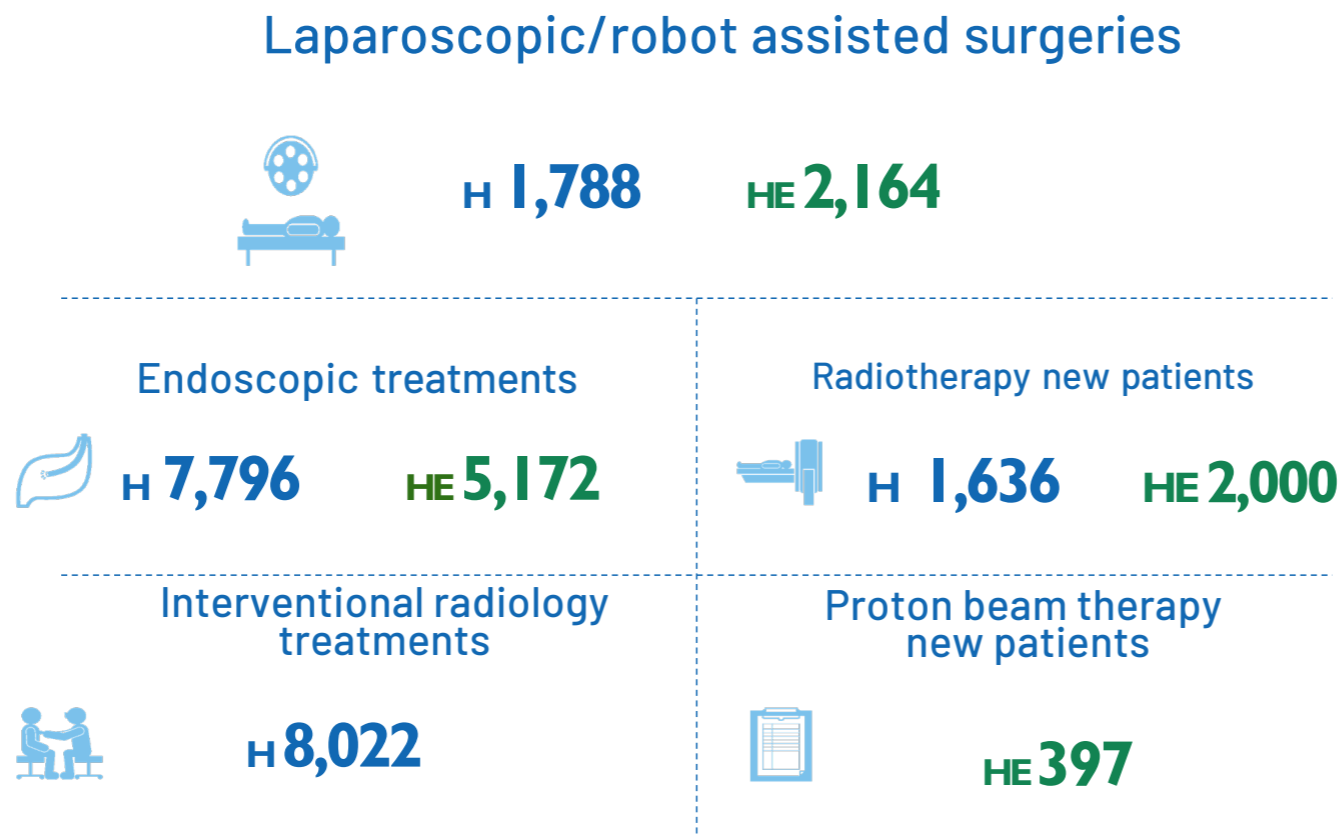
Addressing Unmet Medical Needs

- **Relieve Project**
rare cancer patients gain access to consultations for accurate diagnoses through the nationwide network, developing new treatments
- **Pediatric Cancer Care**
top priority - treatment development, particularly molecular targeted drugs
- **MASTER KEY Project**
prospective registry study, with over 3000 cases registered, now including Malaysia, Thailand, Indonesia, the Philippines, Viet Nam and Taiwan.
- **Neuroendocrine Carcinoma (NEC)**
standard treatment established for the rare cancer, with treatment efficacy underpinned by research
- **Thymic Cancer**
investigator-initiated study led to the world's first approval of lenvatinib indication for unresectable thymic cancer



Minimally Invasive Treatments development and provision

April 2023 – March 2024



- Endoscopic Submucosal Dissection (ESD)
research demonstrating efficacy, placing top among treatments for early colorectal cancer
- ANSUR Surgical Unit
NCC Hospital East developed with Asahi Surgical



Cancer care of the Future, our collaboration with patients and communities

Incorporating Patients' Views

- Patient-Public panel
100 strong advisors serving two years each
- SCRUM-Japan PPI
meetings with patients and patient advocacy groups, incorporating views into our research
- Japan Clinical Oncology Group (JCOG)
PPI in cancer clinical trials, seminars and meetings with patients/advocates, to discuss new study proposals
- J-SUPPORT
research on supportive, palliative and psychological care, working with national patient associations



Comprehensive Support

- Post-diagnosis/treatments research into life issues after cancer diagnosis
- Improving Consultation Services accreditation system to ensure quality of services
- Patient Support Center support programs/group sessions
- LIFE Support Center support for receiving services from multiple departments/teams



NCCJ Publications and Citations

(1) Publications and citations (July 2023)

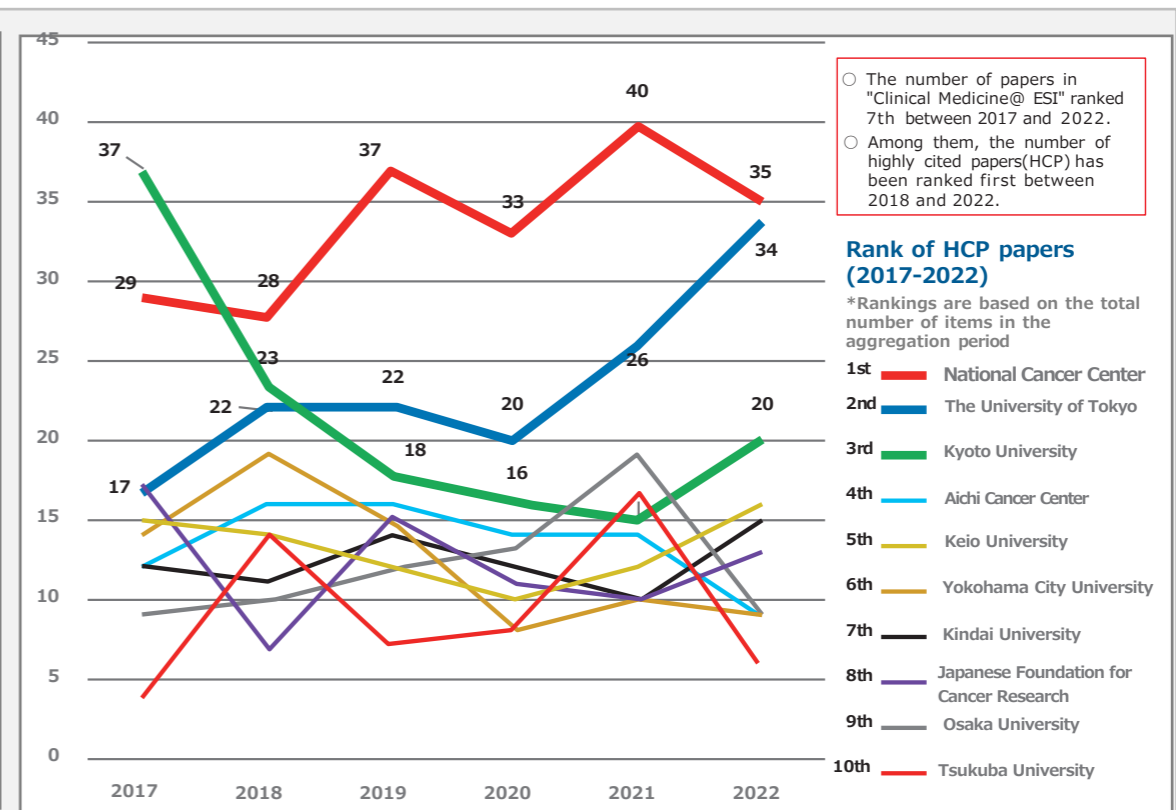
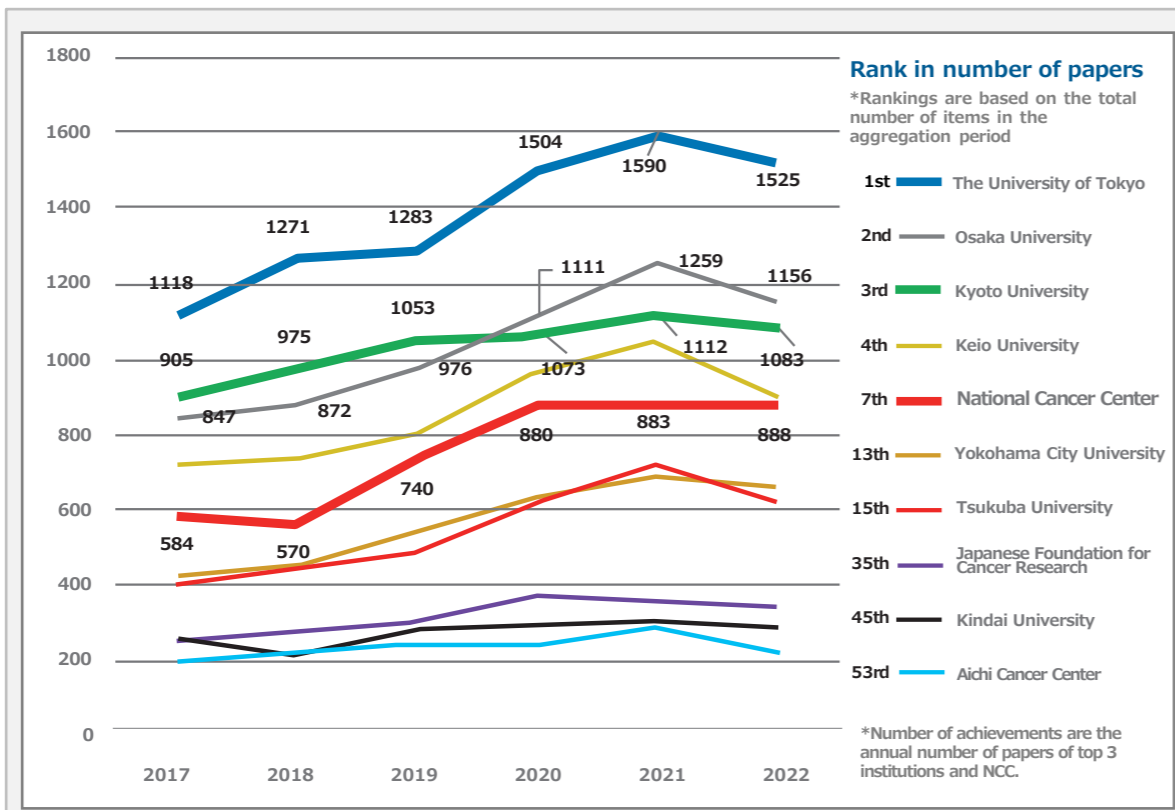
Scores calculated from InCites Benchmarking, Clarivate

Year	2017	2018	2019	2020	2021	2022	Total
Total publication including review articles (articles only)	845 (778)	828 (766)	1,077 (993)	1,296 (1,191)	1,319 (1,195)	1,228 (1,130)	6,593 (6,053)
Citation (articles only)	42,516 (38,390)	33,874 (31,463)	30,869 (27,503)	29,828 (27,678)	12,035 (10,866)	3,375 (3,185)	152,497 (139,085)
↳ Highly cited (articles only)	38 (33)	33 (30)	48 (44)	41 (35)	44 (42)	40 (38)	244 (222)
Impact factor 15+ (articles only)	53 (49)	40 (38)	52 (49)	104 (94)	101 (97)	89 (85)	439 (412)

(2) Comparison with Japanese Academia (2017-2022)

Articles in ESI (Clinical Medicine & Multidisciplinary)

HCP articles in ESI (Clinical Medicine & Multidisciplinary)



Clarivate announces the world's top 1% cited publications in comparison to those published in the same year and field as Highly Cited Paper (HCP), announcing the numbers by affiliated institutes. The above charts exhibit articles / HCP with other research institutes in Japan. Although Clarivate Analytics analyzes the number of articles including reviews, the charts figures are limited to articles.

Working with the Global Community

Networks

- **AsiaOne Consortium**
early new drug development network with bases in Hong Kong, Seoul, Singapore and Taipei
- **LC-SCRUM-Asia**
expansion of SCRUM-Japan incorporating East Asian partners
- **ATLAS Project**
establishing a network of collaborative trial sites to lead development across Asia
- **Asian National Cancer Centres Alliance (ANCCA)**
established in 2005, with 20 national cancer centers, NCC serves on its secretariat team



International Agency for Research on Cancer (IARC)

- **Global Initiative for Cancer Registry Development (GICR)**
designated a collaborative centre, NCC supports establishing/building cancer registries across Asia
- **WHO Classification of Tumours**
NCC participates in editing the fifth edition
- **Population-Based Long-Term Surveillance Team**
a joint IARC-NCC team establishing an epidemiological research platform
- **Asian Code Against Cancer**
serve as the secretariat for coordinating collaboration with ANCCA members





Overseas Partners

Memoranda of Understanding concluded with:

IARC (International Agency for Research on Cancer)

National Cancer Institute, USA

Massachusetts General Hospital

Canadian Institutes of Health Research

INCa (Institut National du Cancer)

DKFZ (Deutsches Krebsforschungszentrum)

Cancer Research UK

China-Japan Friendship Hospital

National Cancer Center, PRC

National Cancer Center, Korea

National Taiwan University Hospital, Taiwan

Asian Phase 1 Consortium

Chinese University of Hong Kong
National Cancer Centre Singapore
National Taiwan University Hospital
Seoul National University Hospital

National Cancer Hospital, Vietnam

Ho Chi Minh City Oncology Hospital, Vietnam

National Cancer Institute, Thailand

Faculty of Medicine Ramathibodi Hospital, Thailand

Dharmais Cancer Hospital, Indonesia

Tata Memorial Centre, India

Cancer Australia

Building the Future

National Cancer Policy

- **Government Councils/Review Bodies**
Many staff are invited to serve on groups hosted by the central government, advising on cancer policies and its implementation, as such working very closely with the government
- **Local Government Support**
training courses are organized for local government staff implementing cancer policies
- **Designated Cancer Care Hospitals Support**
forums are organized for prefectural designated cancer care hospitals staff nationwide, to improve quality of cancer treatment in individual prefectures across the nation

Nurturing Specialists

- **For the Nation**
capacity building of professionals is one of our important missions, we train specialists spearheading cancer medicine across the nation, a total of 760 (2015-2020)
- **Observership Visitors**
capacity building extends to professionals from around the world





Hospital, Tsukiji campus

Outpatient Care

- 1550 patients/day (new/returning)
- 205 chemotherapy patients/day (outpatient treatment center – 69 beds)
- High precision radiotherapy

Consultations

- 1990 Second Opinions
- 8201 new patient cancer support consultations
- 3048 rare cancer hotline calls

Inpatient Care

- 578 beds
- 5642 Surgeries (1334 laparoscopic, 454 robot assisted, fy2023)
- 17 operation theaters
- Advanced endoscopic surgery for early stage gastrointestinal cancers (EMR endoscopic mucosal resection) (ESD endoscopic submucosal dissection)
- Interventional radiology (4 Angio-CT systems)
- Hematopoietic stem cell transplants
- Palliative care and patient support
- Hospital based clinical trials and research



endoscopic treatments



IR center



robot assisted surgery

Hospital East, Kashiwa campus



Advanced Medical Care

- Minimally invasive treatments
laparoscopic/robot assisted surgery
endoscopic resection
(over half of operations: 2164 out of 4455)
- Japan's largest outpatient care center,
outpatient care by pharmacists, 1436 outpatients
daily
- The nation's first proton beam inhouse treatment
facilities, high precision radiotherapy
- 1999 second opinions

Patient Support

- Support for patients and families from early
stages, balancing physical/emotional needs and
social life
- First palliative care ward in national hospital,
with network for close regional cooperation

Developing Next Generation Cancer Medicine

- Cutting-edge clinical trials for
early development of new
cancer drugs, translational
research
- Research for development of
new surgical/endoscopic
equipment through industry-
academia collaboration



Proton therapy



Supportive care center



Palliative care ward

Largest cancer research center in Japan, with over 350 staff

Accomplishments - 1960's to 90's

- 'OncoGuide™ NCC Oncopanel gene panel test covered by national health insurance developed
- cancer specific gene alterations identification and molecular targeted drugs development
- novel carcinogenic mechanisms elucidation by large scale international collaborative genome analyses research
- tumor immune microenvironment mechanisms elucidation and identification of novel targets

Recently

- Medulloblastoma novel genetic alterations identification
- Tumor microenvironment regulatory T cells activation program identification
- Linitis plastica-type gastric cancer therapeutic targets identification by whole genome sequencing
- Predictive immune checkpoint blockades clinical efficacy biomarker development
- Cancer therapeutic targets discovery with synthetic lethality
- Comprehensive cancer medical system development utilising AI
- mother to infant cervical cancer vaginal transmission discovery
- New drug discovery with industry, using bioresources i.e. PDX



Research Institute

Exploratory Oncology Research and Clinical Trial Center (EPOC)

Taking on 'Near Clinical'

- manufacturing to early clinical introduction

Integrated Development

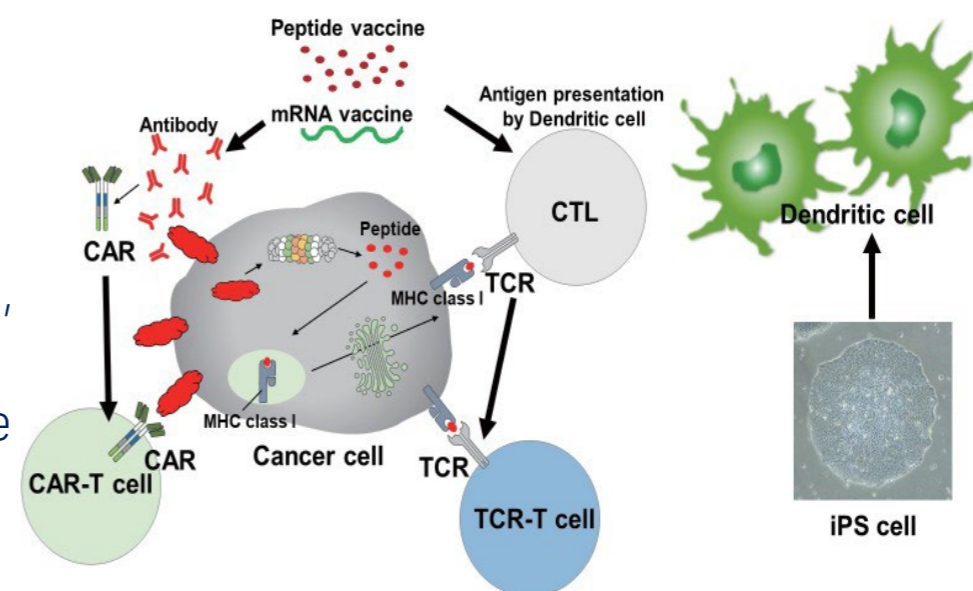
- from initial manufacturing to clinical development
 - regenerative medicine platform with industry
 - RI pharmaceuticals manufacturing with partners

Next-generation Imaging Development

- Cancer tissue spatial information utilization
- Next generation diagnostic imaging development

Therapeutics Customization

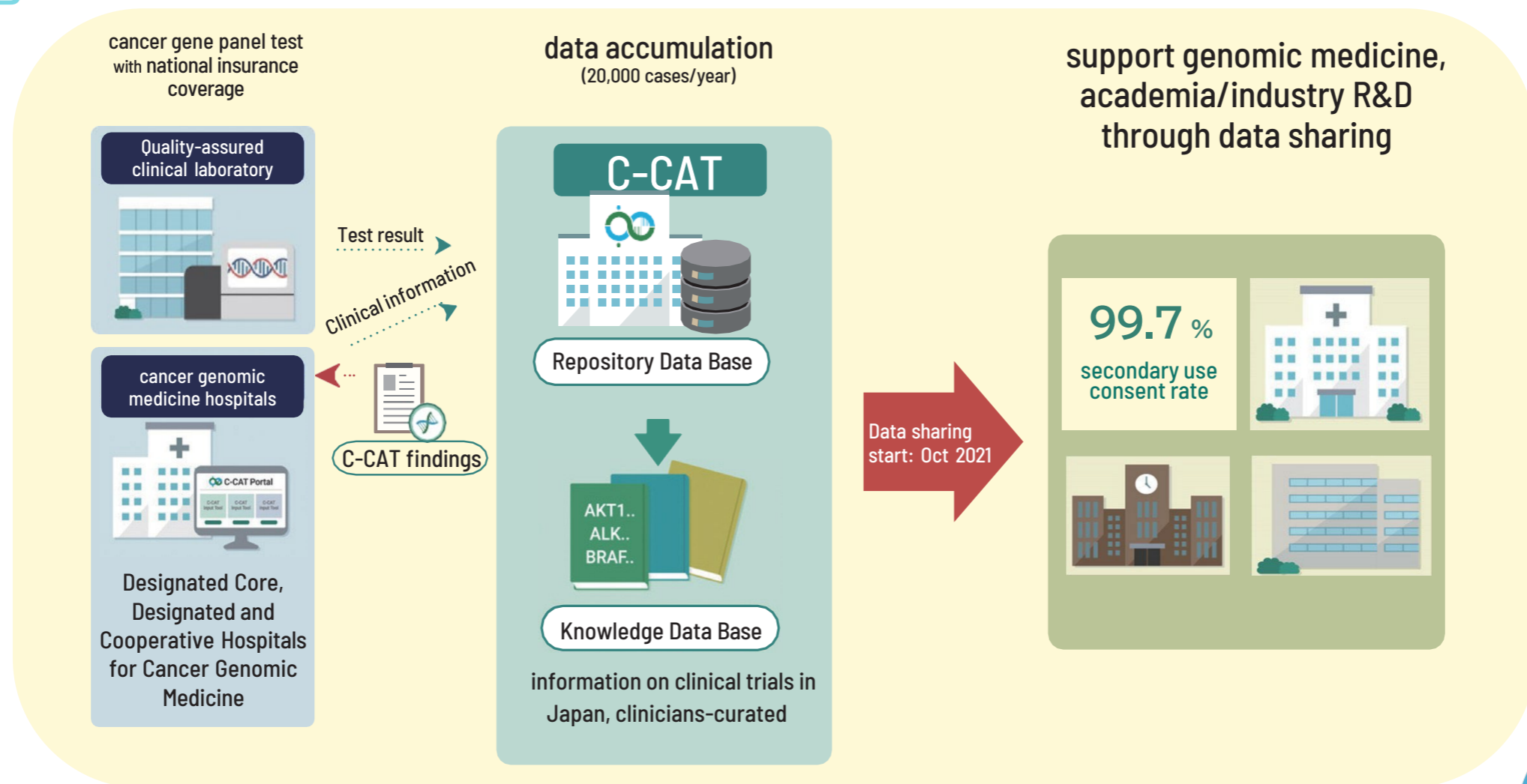
- Next generation cancer immunotherapy development, patient stratification biomarkers establishment
- Cancer vaccines, genetically engineered/regenerative immune cell therapies
- Next generation antibody therapeutics
- Novel cancer drugs discovery utilising AI



Center for Cancer Genomics and Advanced Therapeutics (C-CAT)

Mission

- 1 Ensure and improve genomic medicine quality in Japan:
- 2 Information dissemination:
- 3 Promote clinical trials, research and development

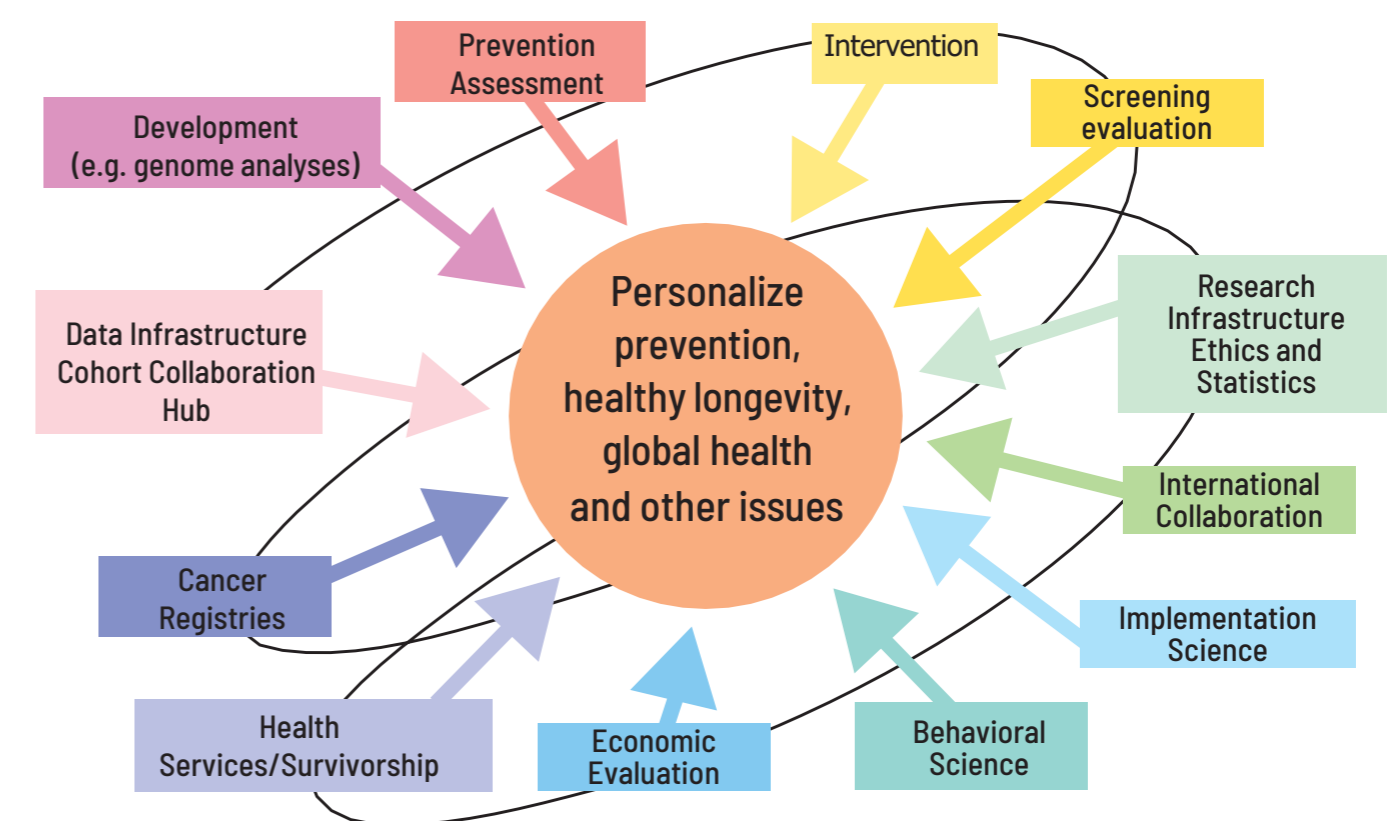


Work with society, derive evidence to drive cancer control, deliver to all

The Institute for Cancer Control brings together the diverse expertise of researchers in social medicine to accurately grasp the needs of an increasingly sophisticated and diverse society and proactively and flexibly make policy recommendations to resolve issues, from research and development to policy implementation.



Institute for Cancer Control



Solving Problems with the Power of Social Medicine

★ ★ ★ ★ ★

**WORLD'S BEST
SPECIALIZED
HOSPITALS**

ONCOLOGY
2025

Newsweek

POWERED BY

statista

**NATIONAL
CANCER CENTER
HOSPITAL**

World's Best Specialized Hospitals on Oncology

The National Cancer Center Hospital and National Cancer Hospital East are consistently listed on the "World's Best Specialized Hospitals" since 2021. Our Hospital is currently positioned fifteenth worldwide first in Japan.

This ranking is based on a survey of 40,000 specialist medical professionals globally, which were then validated by a global expert board. Newsweek partnered with Statista to support the World's Best Hospital Project. The ranking features the top 300 hospitals for oncology.

NCC and the nationwide cancer care network

(April 2024)

- National Cancer Center ---2
- ◆ Prefectural Designated Cancer Care Hosps—51
- District designated Cancer Care Hosps---346
- Other designated Hosps ---61

Nationwide clinical support network with prefectural + district-designated 456 cancer care hospitals

