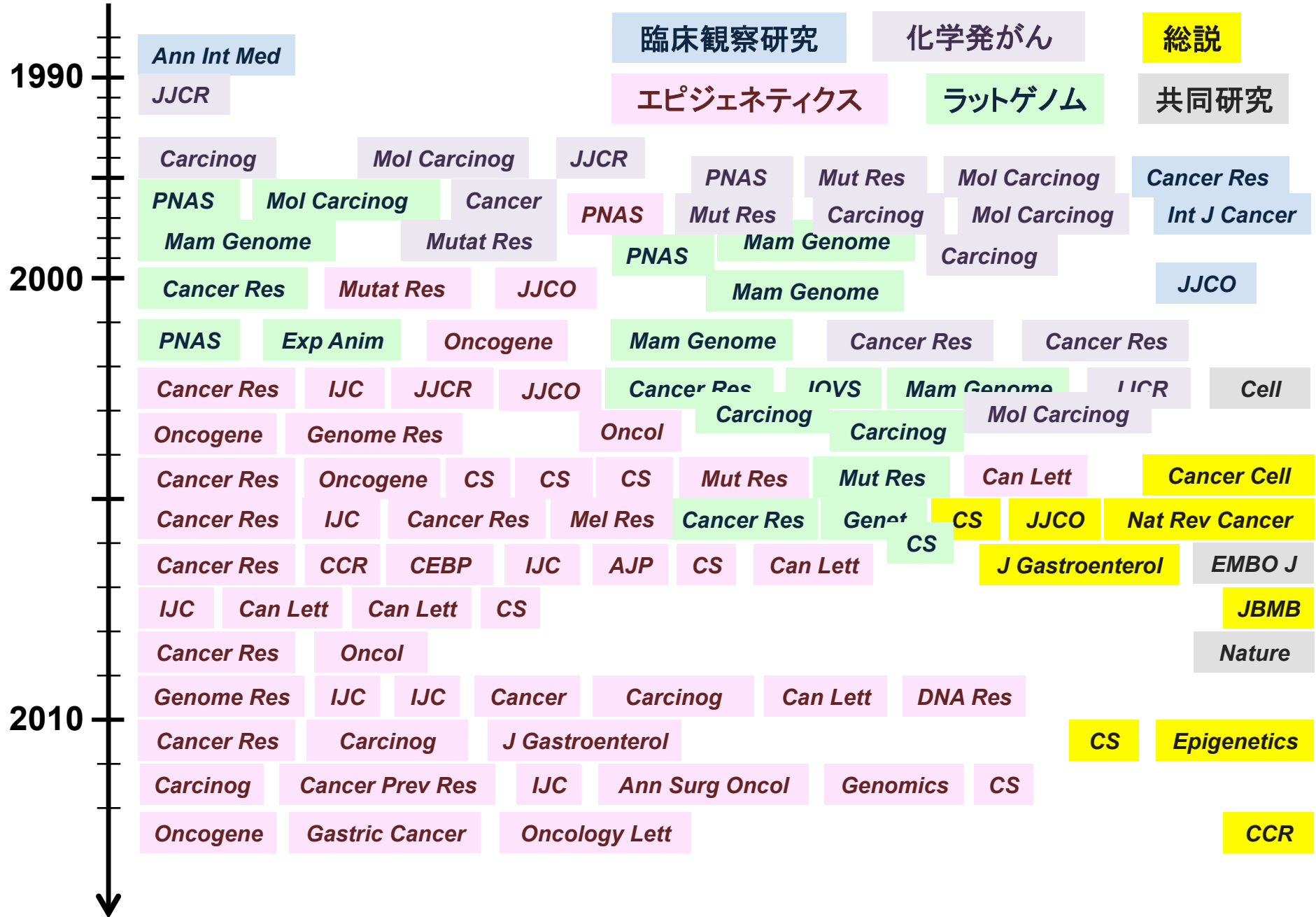


**化学発がんから
トランスレーショナルエピジェネティクスへ**

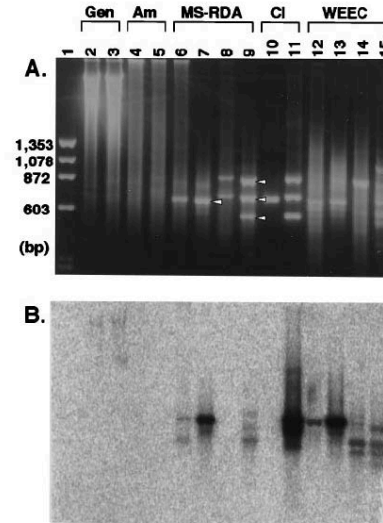
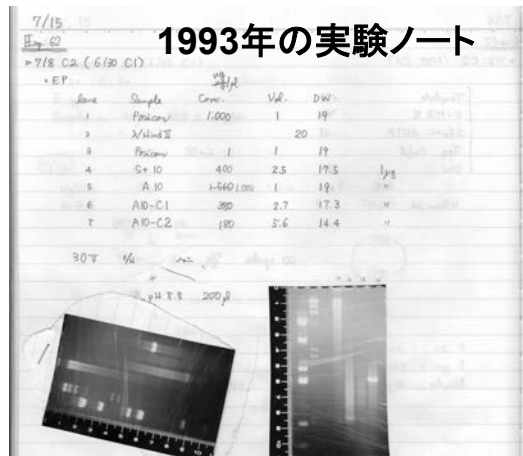
**上席副所長・エピゲノム解析分野分野長
牛島 俊和**

これまで行ってきた主な研究



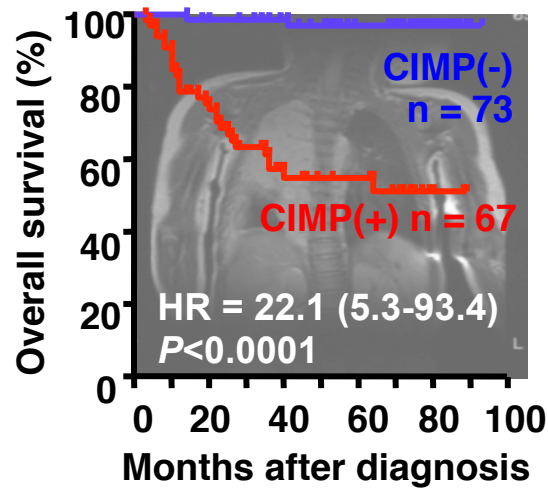
Subtraction -> MS-RDA -> Biomarker -> Epigenetic Therapy

Biochemistry: Ushijima *et al.*

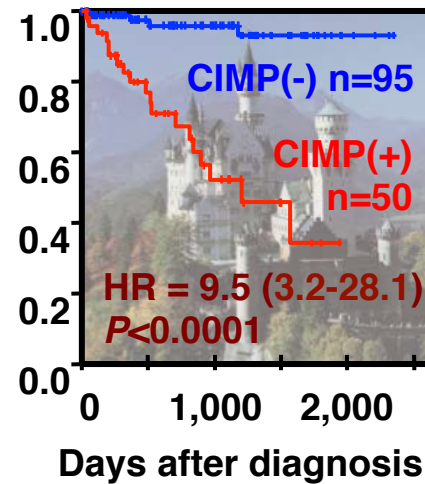


- Takai, *Oncogene*, 20:7505, 2001
- Miyamoto, *Oncogene*, 22:274, 2003
- Hagihara, *Oncogene*, 23:8705, 2004
- Ushijima, *Nat. Rev. Cancer*, 5:223, 2005

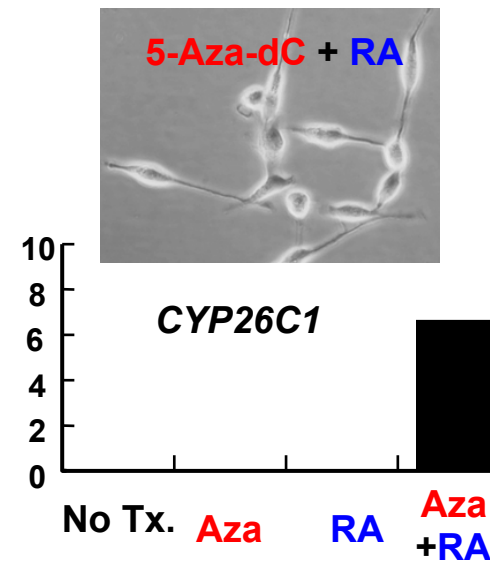
- Ushijima, *PNAS*, 94:2284, 1997



- Abe *et al.*, *Cancer Res*, 65:828, 2005



- Abe *et al.*, *Cancer Lett*, 247:253, 2007

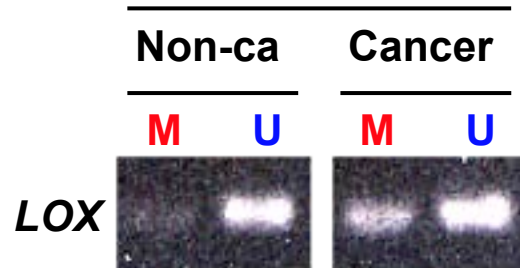


- Abe *et al.*, *Oncology*, 74:50, 2008

Methylation in Non-Cancer tissue -> Epigenetic field defect

- > Mechanisms for Methylation Induction
- > Application as Cancer Risk Marker

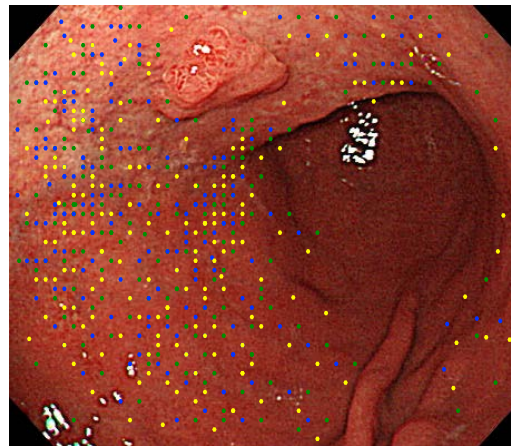
Case 10



- Kaneda, Cancer Res, 62: 6645, 2002

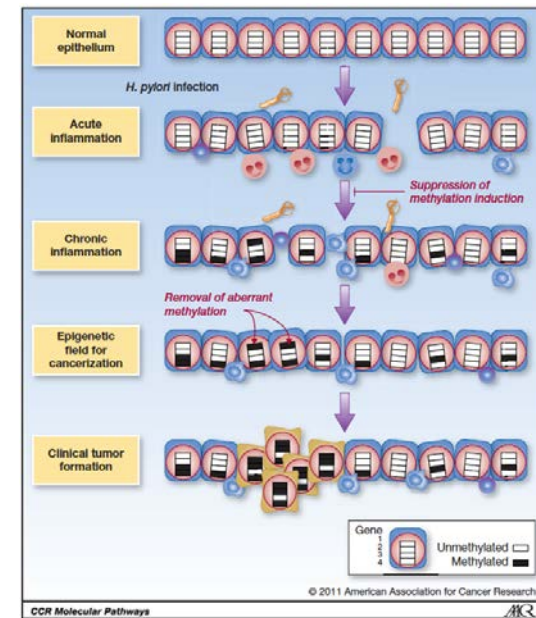


- Kaneda, Cancer Res, 64: 6410, 2004

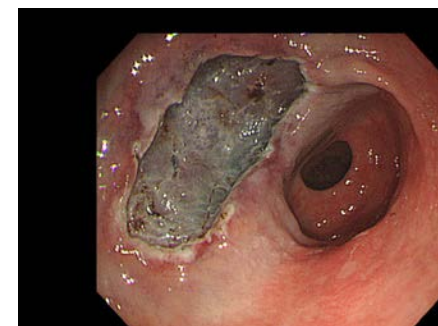


- Maekita, Clin Cancer Res.12:989, 2006
- Nakajima, CEBP, 15:2317, 2006
- Ushijima, J Gastroenterol, 41:401, 2006

Introduced by
 Nat Rev Cancer, 6:172, 2006
 Gastroenterol, 131:1647, 2006



- Niwa, Cancer Res, 70: 1430, 2010
- Hur, Carcinogenesis, 32:35, 2011
- Katsurano, Oncogene, 31:342, 2012
- Ushijima, Clin Cancer Res, 18:923, 2012



829 cases after ESD
 for a prospective study